

2018

CONSULTING  
ENGINEERING  
ARCHITECTURE



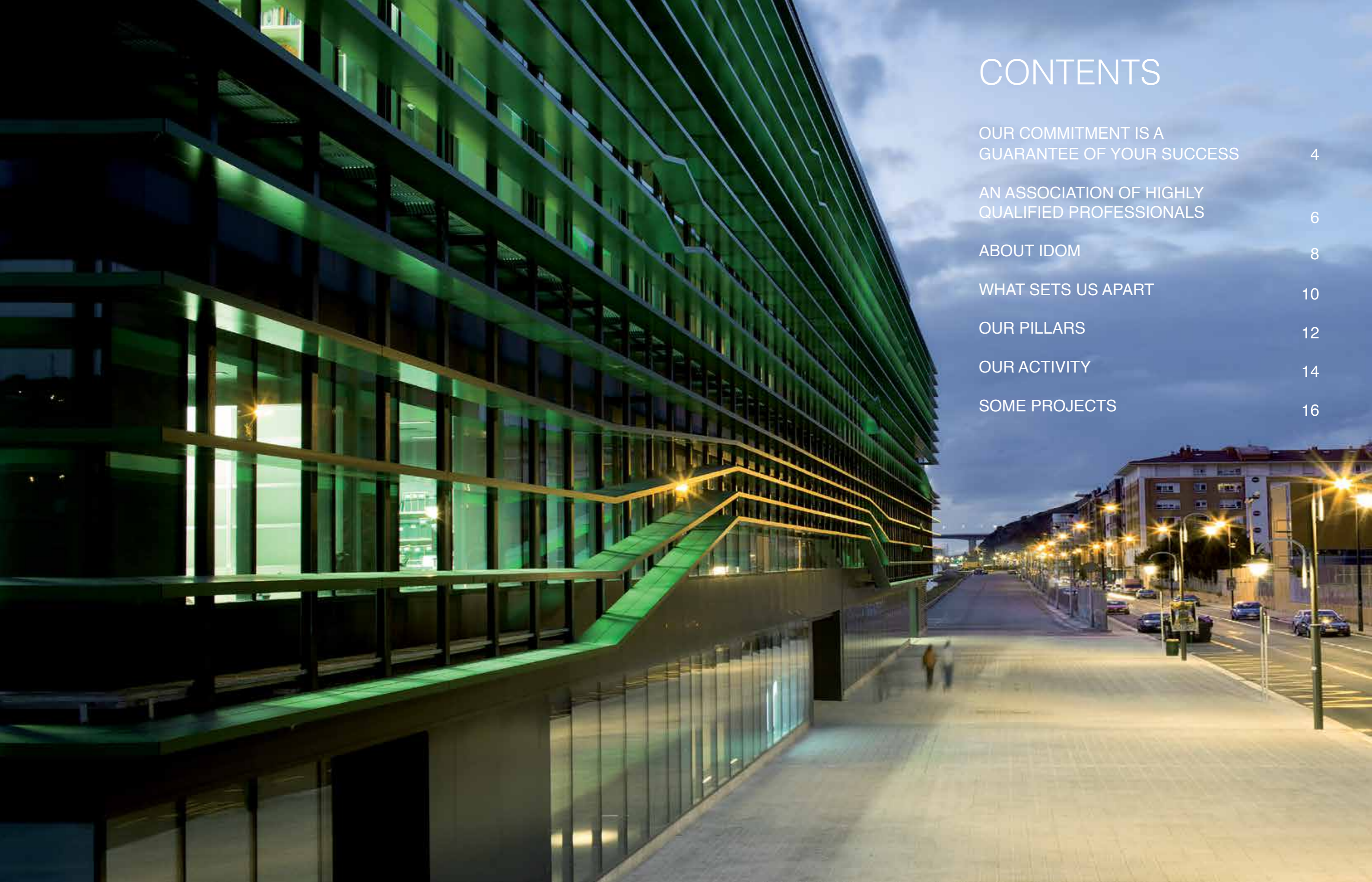
IDOM 2018

[www.idom.com](http://www.idom.com)

EN

**IDOM**





# CONTENTS

OUR COMMITMENT IS A GUARANTEE OF YOUR SUCCESS	4
AN ASSOCIATION OF HIGHLY QUALIFIED PROFESSIONALS	6
ABOUT IDOM	8
WHAT SETS US APART	10
OUR PILLARS	12
OUR ACTIVITY	14
SOME PROJECTS	16



*“Our level of commitment should always be paramount”.*



## OUR COMMITMENT IS A GUARANTEE OF SUCCESS

Despite the political and economic turbulence in much of the world, which is logically reflected in economic and business turmoil, 2017 has been a very important year in the development of IDOM. In line with our strategy, in terms of professional services contracted, we have grown by more than 20%, we have consolidated our activity in Europe, Latin America and the Middle East, and we have entered new geographical markets, such as Southeast Asia and some African countries.

It is impossible to describe, in a few lines, all of the relevant and challenging projects, development and innovation activities we have begun, and above all, the Clients who have placed their trust in us, and in many cases their friendship. To those, I would like to convey our deepest gratitude. Our intention with this publication is to offer a brief overview of IDOM, our values, and some of the activities we have carried out this year. It goes without saying, that we would be delighted to expand on any of the information presented or discuss any aspect that may be of interest to you.

Our goal in IDOM, is to provide our Clients with an excellent top quality service, drawing on our technological

knowledge, which is up there with the best, while offering efficient and innovative solutions to solve their problems. However, there is another aspect that I would like to highlight: Since its inception, a distinctive feature of IDOM has been its commitment. A commitment which involves assuming the needs and difficulties of our Clients as our own. Our commitment includes dedicating ourselves both professionally and personally to all of our projects, driving them forward in the best possible way, battling alongside our Clients to achieve their objectives. Because the success of our Clients is also our success.

And to achieve all of this, we have a team of top-class professionals who work tirelessly, sharing their knowledge, experience and professionalism, often under difficult conditions and in remote locations, demonstrating, each and every day, in every project and to every Client, that our commitment is our way of understanding the development of the profession. Without these professionals, IDOM would not be what it is, a company you can trust in.

Many thanks to all.

**Luis Rodríguez Llopis**  
President



# AN ASSOCIATION OF HIGHLY QUALIFIED PROFESSIONALS

Many times at IDOM, we are posed with the question of explaining who we are, and, since our beginnings in 1957, how it is that we have become a company of reference in the provision of professional services - in the areas of architecture, engineering, and consulting- and how we have been able to grow steadily during challenging economic times, serving Clients with greater needs, and who propose increasingly more complex projects.

Sometimes, the fact that we are a large firm present in over 120 countries, and well known in our business sectors, while not linked to any industrial group or financial institution, is the reason for these questions. Other times, they are asked because the highly qualified professionals of IDOM are working intensely, in extremely competitive markets, while still demonstrating a high level of camaraderie and commitment.

IDOM would define itself as a Free Association of Professionals that share ownership of the company and the work being undertaken, seeking greater professional and personal development, while offering an even better service to the Client.

It is a company whose rationale is to promote, facilitate and provide the highest quality service, while caring for the professional and personal development of its people, proposing innovative solutions, all within a framework of trust, responsibility and autonomy.

For over 60 years, IDOM has been developing its own philosophy, a professional and personal style, which includes total commitment to the success of its Clients. This philosophy has four pillars: excellence in all work developed, constant innovation, camaraderie, and enthusiasm when tackling technical challenges.

Hence, IDOM is a company of highly qualified people, who work closely together, to ensure the success of the Client.

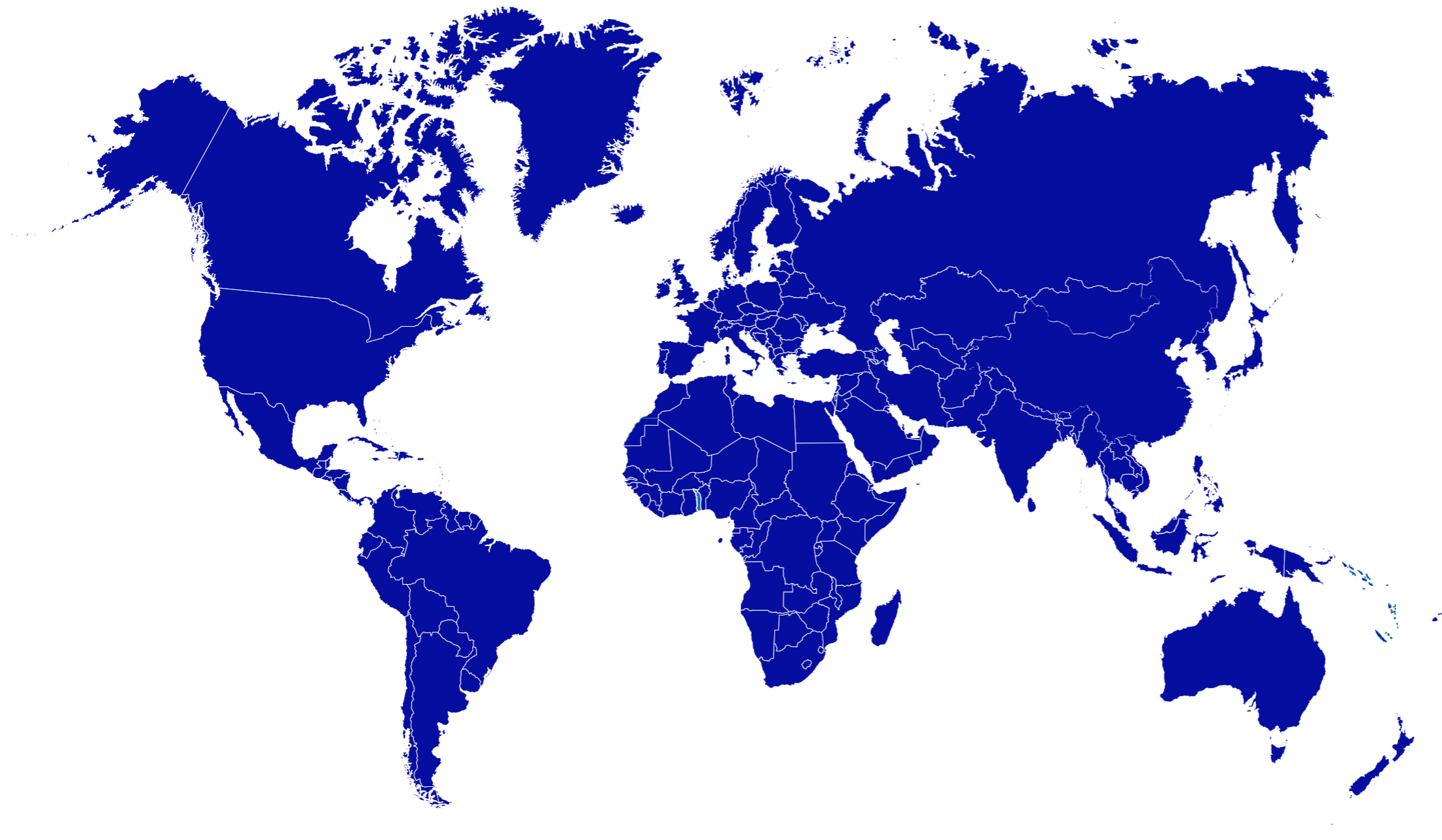
**Miguel Renobales Barbier**  
CEO - Corporative

**Álvaro Rey Cepeda**  
CEO - Infrastructure,  
Architecture & Consulting

**Ignacio Rey Gómez**  
CEO - Industry,  
Energy & Environment



# ABOUT IDOM



€320 M  
Turnover

60  
Years

125  
Countries

40  
Offices worldwide

3,000  
Professionals

700  
Partners



# WHAT SETS US APART

## OUR COMMITMENT

**IDOM**

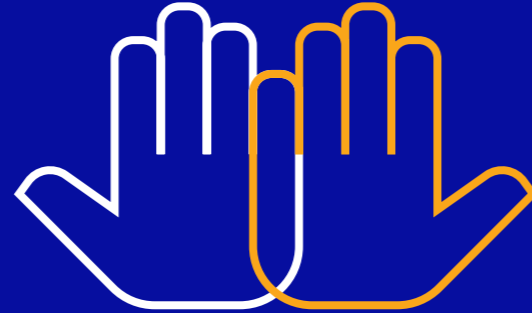
We have the capacity to tackle the most ambitious projects, and those that require an important level of specialization. Experience has shown us that to solve problems and overcome challenges, our Clients need someone they have complete confidence in, not just in terms of knowledge and expertise, but also for something only offered by IDOM: an extraordinary level of commitment, support, and accompaniment until the project is finalized. This is what we have been doing for over 60 years, and something that we will continue to do.



# OUR PILLARS



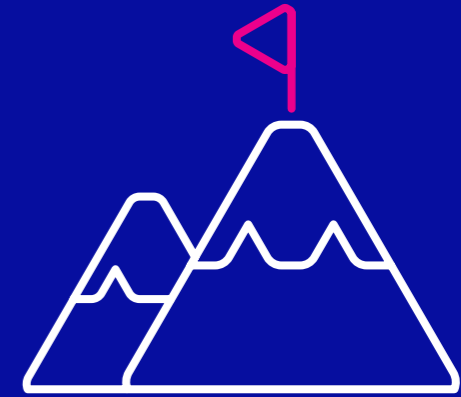
We believe in excellence.  
We strive for excellence in  
everything we do.



We believe in the power  
of human relationships  
as a motivating force to  
overcome difficulties.



Innovation is present in  
each of our actions.



We are passionate about  
resolving problems that no one  
has solved before.

# OUR ACTIVITY

## CITIES

We are working towards achieving the Smart Growth of cities, transforming them into territories which are livable, inclusive, competitive, economically and socially viable, and underpinned by sustainability.

## INDUSTRY

Our commitment is to help industry be more competitive and environmentally sustainable, by providing efficient and innovative solutions.

## ARCHITECTURE

Architecture should not be just a mere product. Rather than simply focusing on the finished project, we pay special attention to the entire architectural process and all its phases, ensuring success.

## SCIENCE & ASTRONOMY

Devoting special attention to the challenges of the most advanced scientific projects. Participating in large-scale Astronomy and Nuclear Physics projects, providing high precision instruments with challenging features.

## PUBLIC SECTOR

We respond to challenges with innovative, achievable, world-class solutions that meet local needs.

## ENERGY

Only by participating in the most advanced energy projects in the world, can we provide technologically innovative solutions for the energy of the future.

## ELECTRONICS & TELECOMMUNICATIONS

Implementing the latest technology, helping our Clients achieve their business objectives.

## WATER CYCLE

Contributing to extending the universal right to water and sanitation.

## TRANSPORT SYSTEMS

Transport systems are the backbone of the economic and social activity of a city.

## DIGITAL

Overcoming the challenges of digital transformation, creating innovative solutions and ensuring the transfer of ideas to the market.

## HEALTH

Resolving the challenges of the health sector to serve the needs of the twenty-first century society.

## ENVIRONMENT

Sustainable development is the premise of our projects, especially those focused on Climate Change and the Circular Economy.



## SOME PROJECTS

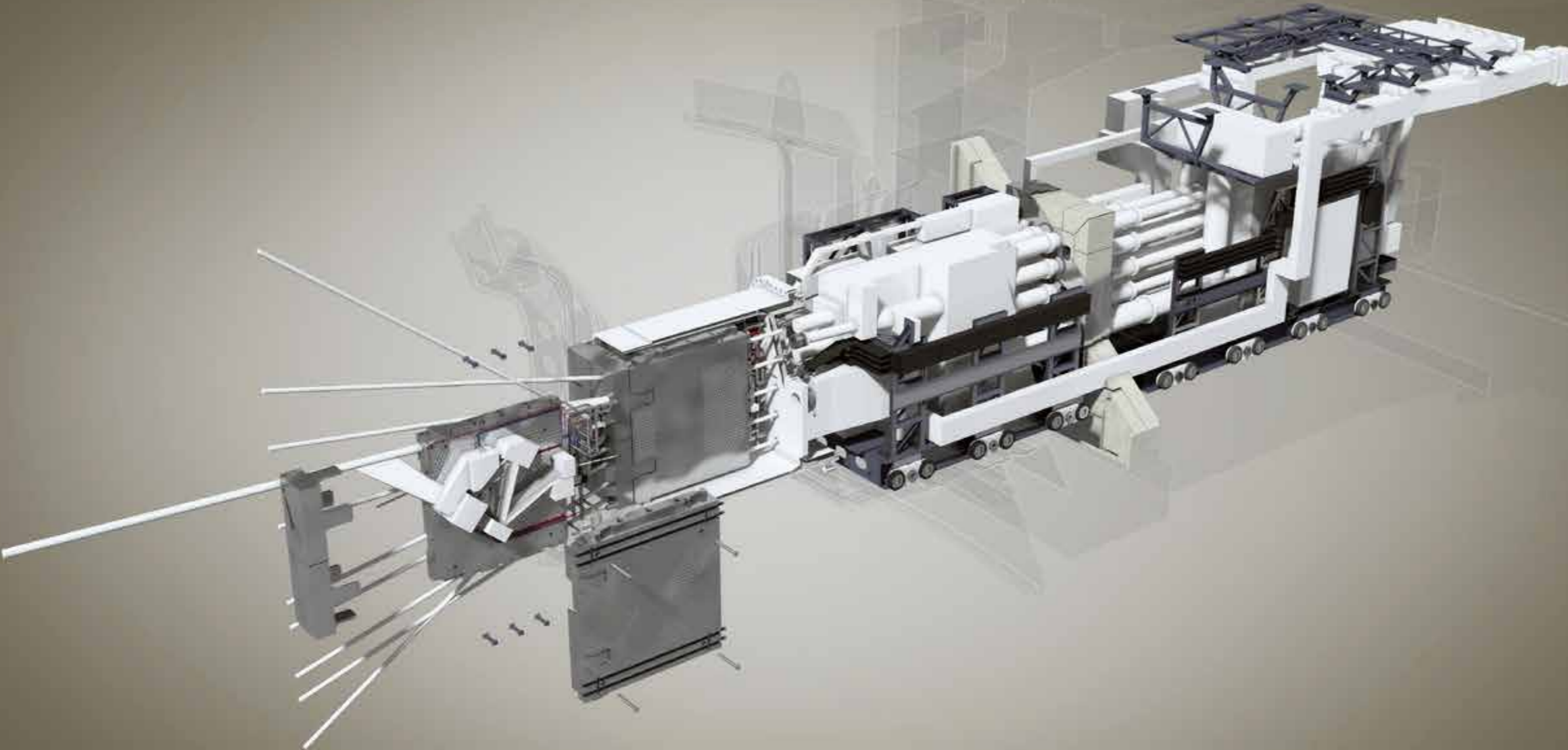
Each project represents a challenge, and our commitment is a guarantee of success.

## ITER, A STAR RIGHT HERE ON EARTH

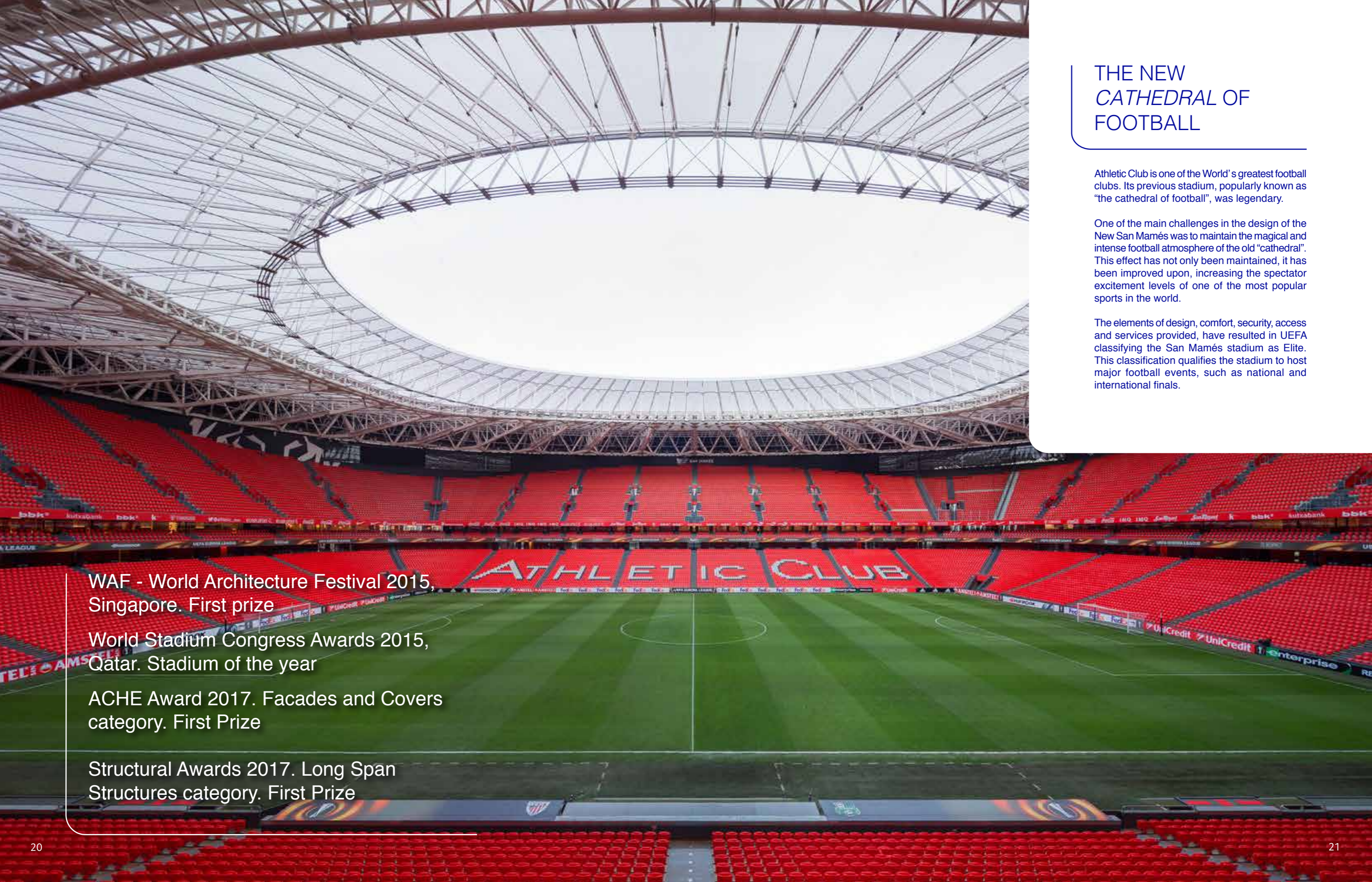
ITER was conceived as the first step in proving the feasibility of fusion as a source of energy. This project involves the construction of the largest experimental fusion facility in the world.

Working for Fusion for Energy (F4E), IDOM is developing the design for the integration of five diagnostic ports, which house various high-tech instruments that will measure and control the plasma generated in the facility.

IDOM has been carrying out extensive work on systems engineering, collaborating with the ITER Organization (IO), F4E, fusion laboratories and suppliers in Europe, USA, Japan, China and Russia, to integrate the systems and produce the complete design of the diagnostic ports.







## THE NEW *CATHEDRAL* OF FOOTBALL

Athletic Club is one of the World's greatest football clubs. Its previous stadium, popularly known as "the cathedral of football", was legendary.

One of the main challenges in the design of the New San Mamés was to maintain the magical and intense football atmosphere of the old "cathedral". This effect has not only been maintained, it has been improved upon, increasing the spectator excitement levels of one of the most popular sports in the world.

The elements of design, comfort, security, access and services provided, have resulted in UEFA classifying the San Mamés stadium as Elite. This classification qualifies the stadium to host major football events, such as national and international finals.

WAF - World Architecture Festival 2015,  
Singapore. First prize

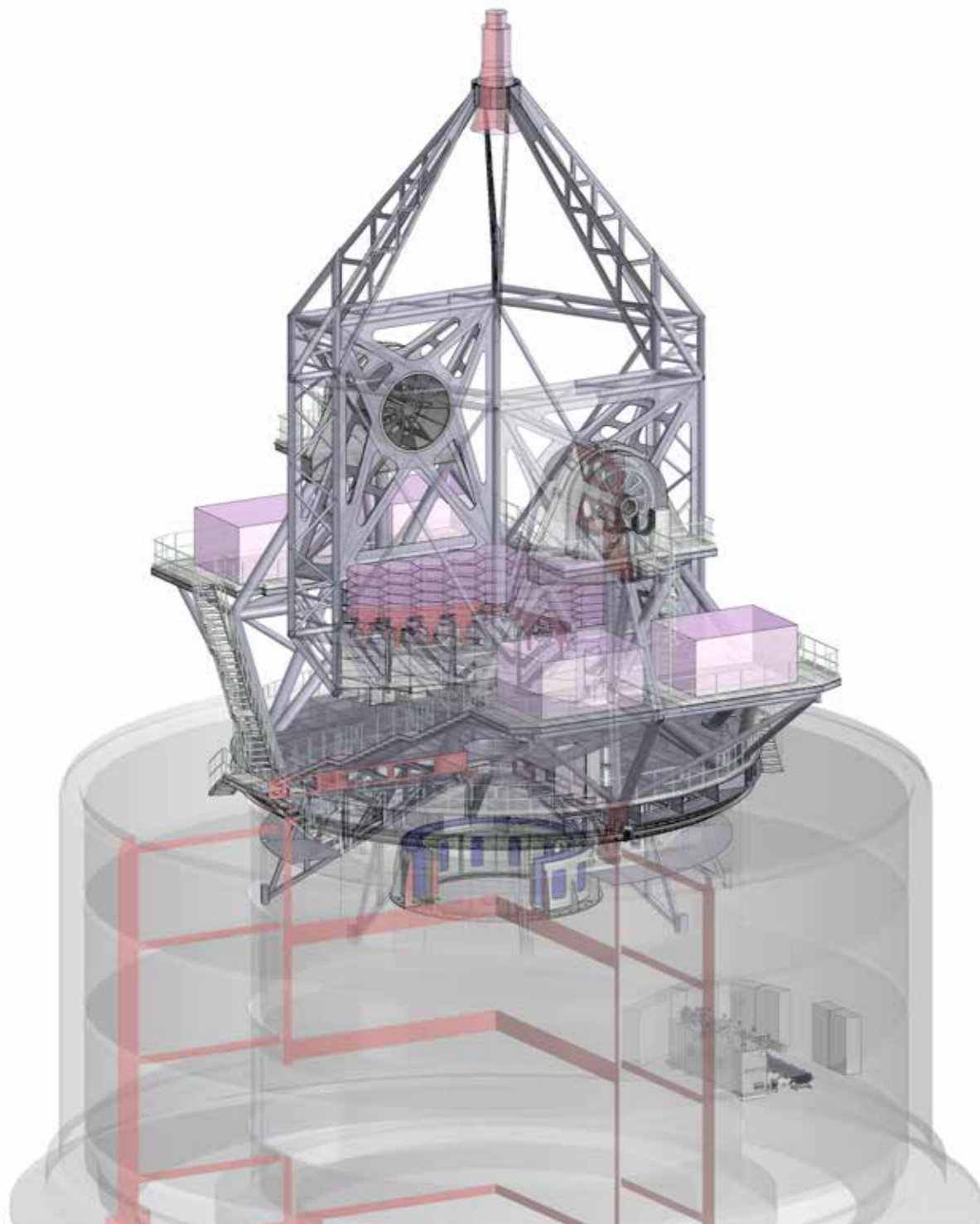
World Stadium Congress Awards 2015,  
Qatar. Stadium of the year

ACHE Award 2017. Facades and Covers  
category. First Prize

Structural Awards 2017. Long Span  
Structures category. First Prize



*"The MSE telescope is a unique facility fully dedicated to the spectroscopic exploration of the Universe that will give uniquely powerful insights into the chemistry and dynamics of the Cosmos."*



## EXPLORING THE UNIVERSE

The main objective of the Mauna Kea Spectroscopic Explorer (MSE) project is the construction of a 10-metre diameter telescope dedicated to the spectroscopic exploration of the universe. With the capacity to simultaneously measure thousands of objects and cover a spectral resolution range of 2,500 to 40,000, this unique facility will offer exceptional scientific opportunities to the astrophysics community for the study of the chemistry and dynamics of the Cosmos.

The IDOM design incorporates groundbreaking architecture, achieving optomechanical and mechatronic characteristics far superior to those of the best known 10-metre class telescopes in operation.





## A METRO SYSTEM IN THE HEART OF THE DESERT

The city of Riyadh has been simultaneously undertaking the construction of six metro lines. The longest of these, Line 3, crosses the city in an east-west direction, along 41 km, of which 26 km are viaducts and 6 km are tunnels. The line has 22 stations, 2 buildings to house workshops and depots, and 6 parking facilities. The project includes the urban developing and landscaping of 2 million m<sup>2</sup>, necessary for the integration of the infrastructure in the city. Forming part of the consortium responsible for design and construction, IDOM has been in charge of its design.

Considering the dimensions of the new infrastructure and the speed with which it is being built, one of the keys to success has been the perfect coordination between the different technical areas, a task made possible because of the multidisciplinary nature of our team.

The new Riyadh Metro, 176 km long, will contribute decisively to the modernization and improvement of mobility in the city.





## CLEANER FUELS FOR PERU

The expansion and modernization of the Talara refinery is the most important energy project developed in Peru in recent years.

Apart from increasing the production capacity for a variety of products and the efficiency of the plant, these projects will also improve the environmental aspects of operations (cleaner fuels, and more ecological processes and waste).

As the Owner's Engineer, the work of IDOM involves an important level of coordination, integration and identification with the Client. This is essential in achieving the ambitious objectives of such a complex project.





## ABI BAKR AL-SIDDIQ ROAD & THE DUNE BRIDGE

As one of the elements of the renovation of the city of Riyadh, the Abi Bakr Al-Siddiq Road is being upgraded to a 12-km urban highway. The new highway will have three lanes in each direction and structures on three different levels to connect with the main intersections. This is a project that combines engineering, landscaping and architecture.

To further enhance the city, by introducing character and personality, the highway includes the iconic “Dune” bridge. This is a structure that takes its inspiration from the curved shape of sand dunes (a motif that extends throughout the entire project). The bridge is illuminated using an original lighting system which has been designed specifically to enhance its urban integration.

IDOM has been accompanying the Client in the development of all the phases of this infrastructure project: from conceptual and detailed design to construction management.





## A GIANT IS GROWING IN ALGERIA

The construction of the new Bellara steel complex in the Jijel region of Algeria is progressing at a good pace. Start-up of the first rolling mill occurred in October 2017, and the project will be completed in 2019 with the addition of 2 further rolling mills, 2 steel melt shops, and the largest direct iron reduction plant in the world. Once completed, the complex will produce 2 million tons of re-bar and wire rod per annum for the construction industry.

IDOM has been involved in the project since the beginning, participating in all phases of development, providing a wide variety of services. At present, IDOM is acting as PMC with two technical teams (over 80 professionals), working on-site and in our offices.

Photograph courtesy of Algerian Qatari Steel.





## INTERNATIONAL FIRM OF REFERENCE IN THE ENERGY SECTOR

IDOM has gained extensive experience in the design of fossil fuel generation plants on four continents (totalling more than 35 GW) and solar thermal power plants using diverse technologies (over 25 projects). Working with our Clients, we can ensure that they add value to their projects and successfully resolve interesting challenges around the world.

IDOM designs around 10 plants a year, for example, the Combined Cycle Plant of Bouchain, France (Guinness world record for efficiency); the Salem Harbor Power Plant, US; the Alba Combined Cycle Plant, the Kingdom of Bahrain; and the Siddhirganj Power Plant, Bangladesh. IDOM has also designed thermal storage systems using molten salts and thermal transmission systems for several important solar thermal power plants in China (345 MWe in total), such as Qinghai Delingha Tower, Dunhuang, Delingha, Gansu Akesai, Gansu Yumen and Gonghe.



## DEVELOPING UNIVERSITIES IN SENEGAL

The Government of Senegal, assisted financially by the World Bank, initiated an ambitious plan for the expansion and improvement of five universities in the country. IDOM has developed two of them: Alioune Diop, in the city of Bambey, located inland, 120 km east of Dakar, and Gastón Berger, in Saint Louis, the old capital of Senegal, in the north of the country. In both campuses, IDOM designed new buildings to house classrooms and teachers' rooms. In the case of Gastón Berger, the project also includes sports facilities.







## TRANSFORMING MOBILITY IN ABU DHABI

Abu Dhabi is developing a strategic plan with a vision for 2030, with the aim of ensuring that the city has the correct sustainable infrastructure, providing the desired quality of life for its citizens.

The plan states that transport infrastructure must ensure the mobility and connectivity of the population through the development of new networks and means of transport.

IDOM is collaborating with the Department of Transportation of Abu Dhabi in the design and implementation of new applications based on Geographic Information Systems (GIS). The GIS is conceived as an integration platform that will facilitate the interconnection of more than twenty information systems, both from the Transportation Department itself and from external actors who directly influence transport planning.





## LOW CARBON PROJECTS IN LATIN AMERICA

The world aspires to take care of its natural environment and improve the quality of the air we breathe. The era of decarbonization is here to stay. 2050 has been set as the year by which CO<sub>2</sub> emissions will have been reduced by 80% in comparison to the levels of 1990.

This challenge will require a profound economic, social, technological, and political change. To achieve this goal, it will be necessary to progress gradually and sustainably towards a society with low carbon dioxide emissions, where clean technologies will play a fundamental role.

Brazil, the lung of the planet, is committed to becoming a “low carbon” economy and society, promoting the adaptation of its companies to clean technologies. Other Latin American countries such as Mexico, Colombia, Chile and Peru are also embracing this challenge. These are countries where IDOM is working at institutional and enterprise level helping them meet their goals.





## RESILIENT CITIES

Regions and their cities need to assess their vulnerability to the effects of climate change, and identify the options that they can adopt to become resilient territories, capable of building socio-economic and environmentally sustainable growth, reinforcing the development of the city, advancing in a positive direction.

IDOM is collaborating with the Inter-American Development Bank, the Global Environment Fund and the World Bank, providing a holistic approach and tools, developing projects that pursue environmental, urban and fiscal sustainability.

Currently, IDOM is the leading consultant in urban resilience projects in Latin America.





## DWARKA. INDIA INTERNATIONAL CONVENTION & EXPO CENTRE

The India International Convention & Expo Centre (IICC Dwarka) project in Dwarka is the result of the international bidding contest organized by the Delhi Mumbai Industrial Corridor Development Corporation (DMICDC) in January 2017.

The work, developed in less than three months, involved the preparation of the necessary documentation for the tender of the entire building and the urban development of the complex. The project will be executed in two phases, the first of which will be inaugurated at the end of 2019.

Located 11 km from the Indira Gandhi Airport in New Delhi, the IICC will be the largest exhibition centre in India and South Asia. Conceived as an anchor project for the future development of the country and strategically located between New Delhi and Gurgaon, the development covers 90 hectares, comprising an exhibition area of 403,000 m<sup>2</sup>, a 73,000-m<sup>2</sup> convention centre, 236,000 m<sup>2</sup> of office space, 339,000 m<sup>2</sup> for hotels, 156,000 m<sup>2</sup> of commercial space, a 64,000-m<sup>2</sup> multi-purpose pavilion with a capacity for 20,000 people, and more than 1 million m<sup>2</sup> for parking, in total almost 2.5 million m<sup>2</sup>.



For more information,  
visit our website:

**[www.idom.com](http://www.idom.com)**