

sb

www.iaks.sport

International magazine for sports,
leisure and recreational facilities

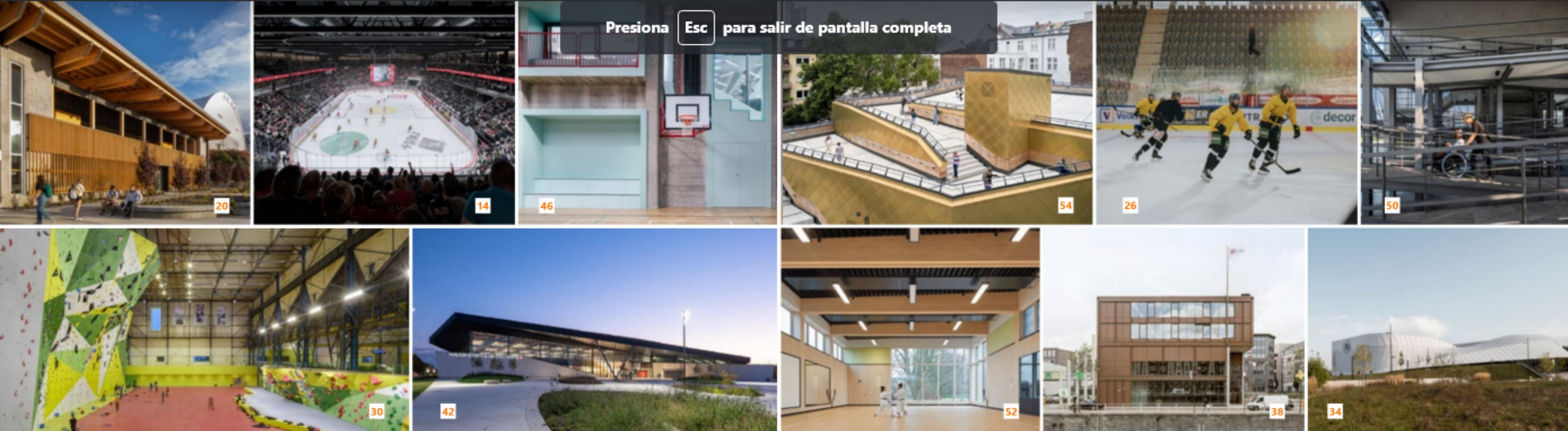
57th year

ISSN (Print): 0036-102X
ISSN (Internet): ISSN 2198-4271

1/2023

SPORTS HALLS AND ARENAS





Presiona Esc para salir de pantalla completa

SPORTS HALLS AND ARENAS

Title: Walker Sports and Abilities Centre
Photo: Scott Horsworthy

sb 1/2023

NEWS

- 28th IAKS Congress: Submit your abstract! 4
- 2023 IOC IPC IAKS Architecture Prizes: Submit now! 4
- 2023 IAKS Study Trip to Tokyo, Japan 6
- Sport Ireland Campus masterplan launched 8
- New to the IAKS Network 10

PROJECTS

- Vaudoise Aréna in Malley, Lausanne 14
Pont12 architectes
- University of Idaho Central Credit Union Arena in Moscow, Idaho 20
Opsis Architecture
- Intercable Arena in Bruneck 26
CeZ Calderan Zanovello Architekten

PROJECTS

- Multipurpose sports centre in Tarbes 30
IDOM
- Multifunctional sports and entertainment arena „Espace Mayenne“ in Laval 34
Hérault Arnod Architectures
- „Amal Amjahid“ community centre in Molenbeek 38
BOGDAN & VAN BROECK
- Walker Sports and Abilities Centre in Toronto, Ontario 42
MJMA Architecture & Design, Raimondo + Associés Architects
- Expansion of Las Eras Sports Center in Madrid 46
ENKIRO
- Boccia Training Center in Bangkok 50
pbm
- Shotokan Karate Dojo in Münster 52
ntarchitektur
- Schillerschule Gym in Frankfurt am Main 54
Trapez Architektur

ADVERTORIALS

- Sustainability and the fusion of e-sports and real sport 56
ASB GlassFloor
- Sustainably and efficiently to perfectly prepared ice 58
WM
- Football stadium becomes Handball World Championship Arena 60
NUSSLI Group
- The lifeguard's third eye 62
Poseidon
- Innovation rooted in tradition 63
engo
- Customised sports hall solutions 64
Rüder Zelt- und Veranstaltungsservice
- Customised seating solutions at the Vaudoise Aréna 65
Daplast

PROFESSIONALS & PROFILES

- Conica invests in research laboratory 65
- Renovation of a gymnastics centre 66
- TatamSport electric divider curtains 67
- All you need in sports 67
- Growing activities in Southeast Asia 68
- ALL-IN-ONE sports surface cleaning 68
- GEZOLAN expands Executive Board 69
- 25 years of Speed-Lock 69
- Soccer, Handball, Hockey 70
- Ever heard of para ice hockey? 70
- Company Index from A to Z 71
- Imprint 70



A CATHEDRAL FOR CLIMBERS

MULTIPURPOSE SPORTS CENTRE IN TARBES

The task for IDOM was to transform an old military industry building from the early 20th century into a large sports centre of major importance for the city, the region and the country. The multipurpose facility in Tarbes houses athletics, basketball, handball and badminton courts. The climbing area in the core of the building has two walls facing each other as if it were the choir of a cathedral.

The building, oriented north-south, measures 125 m long by 35 m wide and is organised into a 20 m high central building and two 13 m high side buildings. With a clear and repetitive geometry and a saw-toothed roof, the buildings emulate the nobility of a cathedral, despite having a modest exterior appearance, the result of the passage of time, of neglect and the absence of a façade cladding. Its grandeur is evident in the interior through the expressiveness of the polychrome structure that defines the character of the space with the spectacular zenithal light that penetrates the glazed roof over fifty per cent of its surface area.

The building was treated to a new façade with a brick base, in harmony with the architecture of the neighbourhood, and a white cladding that extends to the edge of the roof. The roof is clad in white mini-wave sheet metal, commonly used in the industrial world, in which new strategic openings are inserted to express the public nature of the new building and open it up to a more permeable relationship with its surroundings.

Remodelling by colour and space organization

The design concept aims to maintain the value of what already existed, preserving to the end the perception of its

Location
Tarbes, France

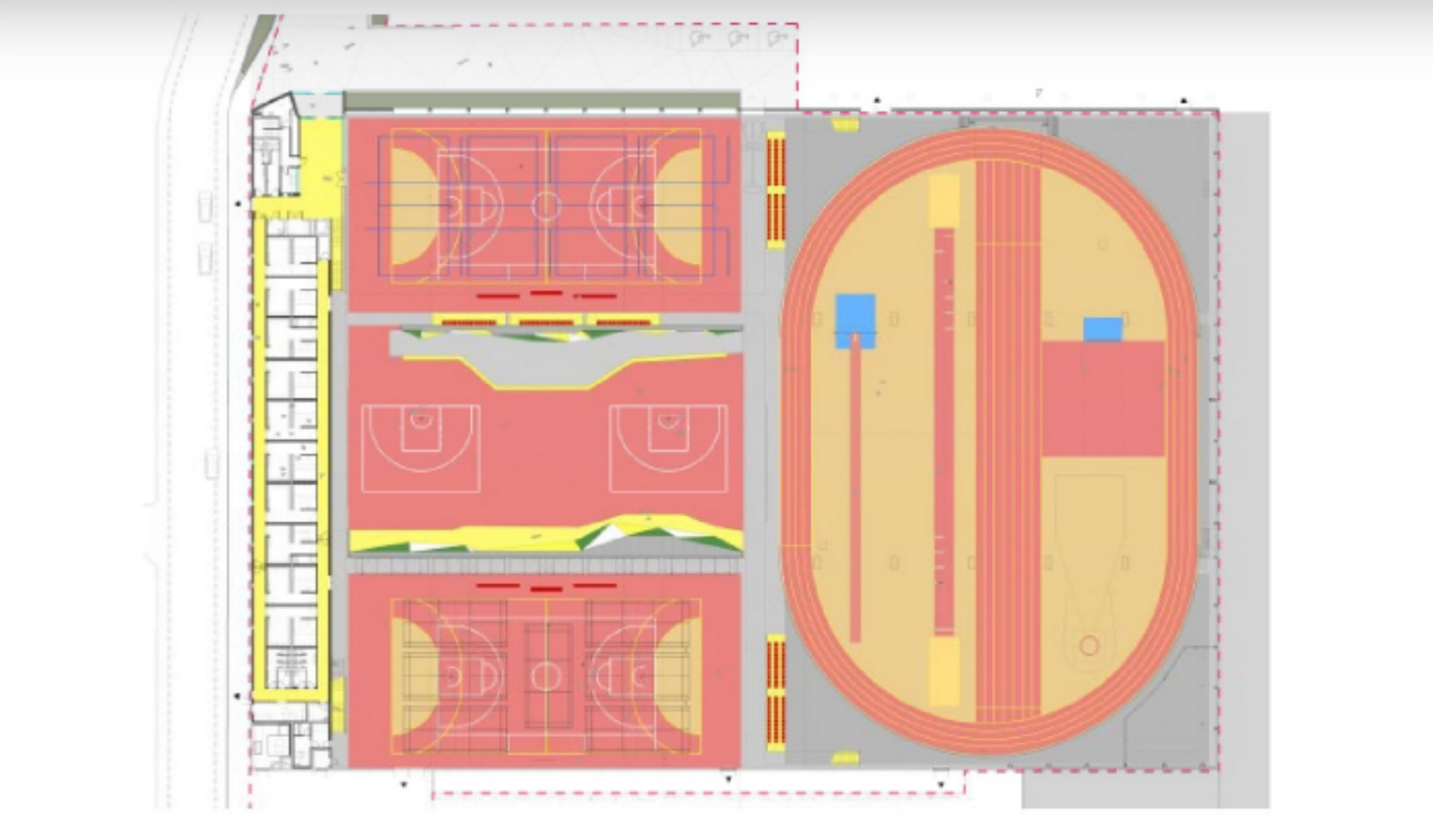
Client / operator
Tarbes Lourdes Pyrénées

Architects
IDOM
ES - 48015 Bilbao
www.idom.com

Author
IDOM

Photos
Pedro Pegenaute

Official opening
January 2022



original character, despite the introduction of new light and colourful characteristics linked to the new playful use that the building must express.

The designers intervened on the flooring, hitherto grey, filling it with colours to define the new sports practice areas: athletics, basketball, handball, badminton courts and the climbing walls.

The arrangement of these sports uses is key to understanding the rationale of the project. In the central space, the climbing area dominates with two walls facing each other as if it were the choir of a cathedral, equipped with suspended radiant panels, dedicated to maintaining the thermal conditions required for international certification. On either side are two multi-sports courts for basketball, handball and badminton. At the north end of the building, the athletics

track meets regulatory standards, along with a high jump, a long jump and a shot-put area. There are also 100-m sprint tracks in the central building, running along both sides of the cathedral-like area.

Walkways also serving as spectator area

The requirements of the new non-sports programme (lobby, changing rooms, sports federation rooms, offices) are resolved with a two-storey building on the south façade. This section, with a viewpoint terrace area on the second floor, is joined to a series of walkways that delimit the sports uses as well as serving as a spectator area. In order to minimise the compartmentalisation of space and maintain the scale of the building, the walkways are perceived as weightless, floating in the industrial cathedral space as they are embedded in the large pillars of the building and hang from the pre-existing bridge cranes, breathing new life into them.