



DESIGN ARCHITECTURE

LANDSCAPE



ABOUT US
EXPERTISE
PROJECTS
OFFICES

CONTACT DETAILS

IDOM | BUILDINGS | DESIGN ARCHITECTURE

LANDSCAPE ARCHITECTURE



about us

IDOM

Consulting, Engineering & Architecture

brings to life an internationally recognised and distinctive identity through its architectural and landscape design. Working in close collaboration with our extensive network of in-house specialists, we deliver coordinated, efficient solutions that meet the most demanding client expectations, helping to shape a better world.

Across geographies and scales, our landscape architecture practice brings together design excellence and technical rigour to deliver context-driven solutions, from urban parks and public spaces to large-scale environmental and infrastructural landscapes. We turn complex constraints into sustainable, inclusive and meaningful environments.

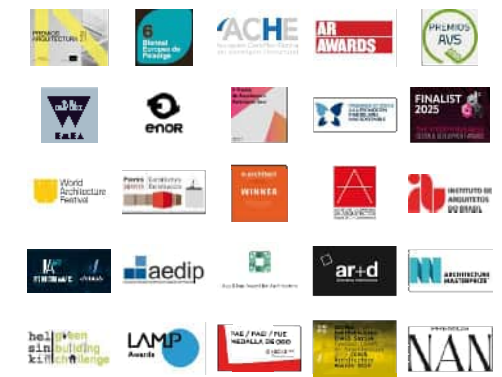
Our soul — *At the heart of IDOM lies a clear sense of purpose. Our clients are the centre of everything we do, and our people, a community of highly qualified professionals committed to continuous development, are the foundation on which the company is built. Together, we pursue excellence as a shared way of working.*

Our pillars — *Five principles guide our work: a relentless pursuit of excellence; a belief in human relationships as the motivating force that helps us overcome any challenge; a passion for solving problems no one has solved before; innovation as a constant presence in everything we do; and a commitment to sustainability, which maximises the value our work brings to the environment, to people, to local communities and to the planet.*





WA
100
2026
archello



Our work has been recognised with **over 200 international awards** in architecture and landscape design, including the Middle East Landscape Award, the Aga Khan Award for Architecture, the Spanish Architecture and Urbanism Biennial, the Chicago Athenaeum International Award and the Architecture MasterPrize, among many others.

- #10 Best architecture firms in the world (Archello)
- #43 Firms worldwide by number of architects (WA100)
- 200+ International awards and distinctions
- 3 continents Landscape recognitions across the Middle East, the Americas and Europe



expertise

Landscape typologies

Natural parks · Agro-productive landscapes · Urban parks and gardens · Urban design and regeneration · Transport and roads · Green and blue infrastructure · Energy and industrial sites · Sports complexes · Health · Corporate spaces · Tourism and residential developments.



Landscape as a strategic foundation

“At IDOM, landscape architecture shape’s identity, resilience, and lasting performance. Rooted in a deep reading of cultural, climatic, ecological, and social context, our approach transforms each site into meaningful environments, where landscape structures space, supports infrastructure, and elevates everyday life, generating character, wellbeing, and enduring value.”

Resilient and evolving landscapes

“We design landscapes built to evolve. Conceived as adaptive systems rather than fixed compositions, our projects respond to climate uncertainty and shifting demands through robust planting, flexible structures, and durable materials. Balancing ecological performance, technical rigor, and spatial quality, we embed resilience from the outset, turning change into a driver of lasting value.”





Data informed, technically robust design

“Our design process is grounded in technical knowledge and measurable data. From climate comfort studies and water demand calculations to maintenance strategies and lifecycle analysis, analytical tools inform and validate every proposal. This data-driven approach enables open, transparent dialogue with clients and stakeholders, aligning ambition with feasibility.”

Global experience, local sensitivity

“IDOM’s global presence enables our landscape team to operate across cultures, climates, and scales with confidence and precision. From Europe to the Middle East, the Americas, Africa, and Asia Pacific, we bring international expertise while remaining attuned to local conditions and identities. Every landscape is unique, shaped by place, purpose, and people”





Specialists involved in landscape design

Landscape architects · Architects · Urban planners · Agronomists · Horticulturists · Forestry engineers · Arborists · Ecologists · Hydrologists · Water engineers · Infrastructure engineers · Environmental consultants · Sustainability specialists · Lighting designers · Wayfinding & signage designers · GIS analysts · Heritage experts · BIM & digital modelling specialists · Cost engineers · Quantity surveyors.



projects

City & Territory

- San Rafael Ecological Park, Colombia
- Vitoria's Green Belt, Spain
- Jubail West Master Plan, KSA
- Wahah NEOM, KSA
- Jazan's Downtown Waterfront, KSA

Parks & Infrastructure

- Aragon Technology District, Spain
- NEOM Highway Beautification, KSA
- Alberto Simoes Park, Brazil
- Santiago Airport's Landscape, Chile
- Da Gare Urban Park, Brazil
- Ebro Park, Spain
- San Fernando River Park, Spain

Buildings

- India Convention & Expo Centre, India
- Coral Nursery, KSA
- New Beronia Rioja Winery, Spain
- Kiu Protontherapy Centre, Georgia
- Edwards Lifesciences Plant, Spain



La Calera | Colombia LOCATION
2018 PROJECT YEAR
996 ha (376 ha of reservoir) AREA

San Rafael Ecological Park



San Rafael Park is conceived as a major ecological and recreational destination for Bogotá, helping increase green space per inhabitant while improving access through a future cable car to La Calera.

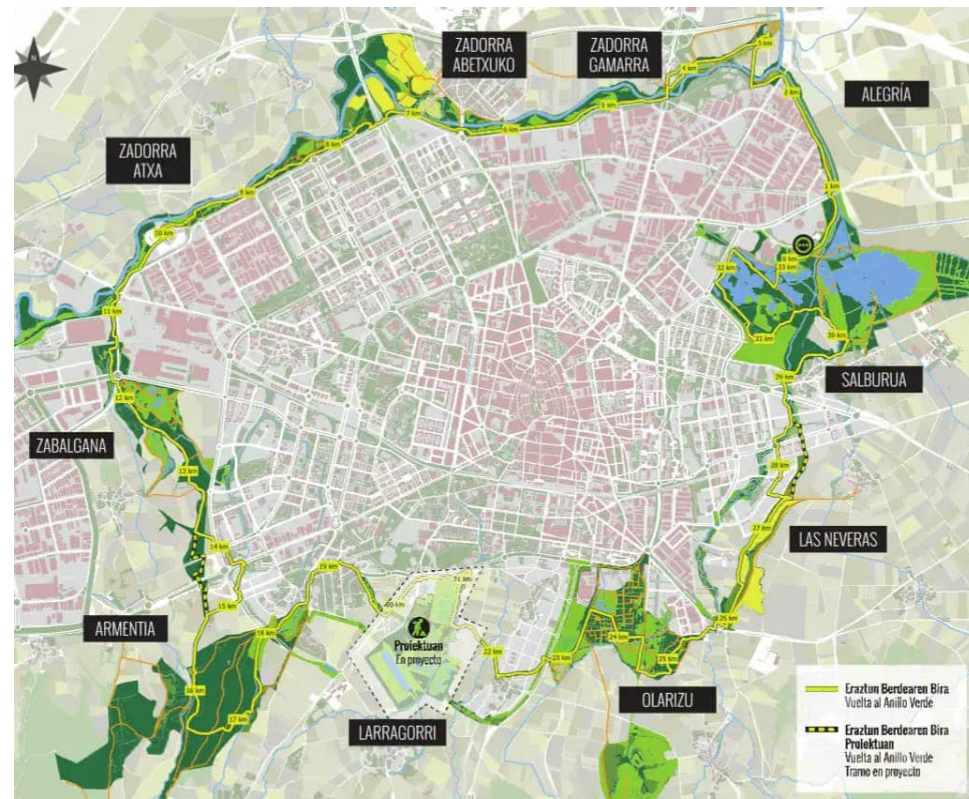
Covering 996 hectares within the highly protected El Sapo Forest Reserve, including the 376-hectare reservoir that supplies Bogotá, the project seeks to balance public use with environmental restoration. Its main challenge is to create a park that protects and revalues the landscape while supporting local socioeconomic development through ecotourism. All interventions respond to strict environmental regulations, leading to low-impact solutions such as elevated stilted buildings and cross-laminated timber structures adapted to the site.

- Finalist. World Architecture News Awards 2020. Future Projects: Leisure Category



Zaragoza | Spain LOCATION
2010 PROJECT YEAR
800 ha AREA

Vitoria's Green Belt



Emerging from a long-term strategy of ecological restoration and urban regeneration, the Green Belt of Vitoria-Gasteiz forms a continuous network of periurban parks and eco-recreational corridors surrounding the city. The project has transformed degraded peripheral areas into a diverse landscape system combining woodlands, wetlands, rivers, meadows, fields, and hedgerows, many of them recognised for their environmental value. The Green Belt provides accessible spaces for walking, cycling, leisure, and environmental education, strengthening the relationship between the city and its natural surroundings. Its connected structure enhances both biodiversity and public use, creating a large-scale green infrastructure that supports landscape quality, recreation, and ecological awareness.



Al Jubail | KSA LOCATION
2021-2024 PROJECT YEAR
5150 ha AREA

Jubail West Master Plan



The Jubail West Master Plan represents a large-scale landscape and urban framework developed for the city of Jubail, Saudi Arabia, in a context strongly defined by arid climate conditions and rapid urban growth.

IDOM's approach integrates landscape, infrastructure and environmental criteria to structure a resilient and legible territory, capable of supporting future development while improving environmental performance and quality of life. The landscape strategy plays a key role in organizing districts, defining open space networks, and improving microclimatic conditions through green corridors, public spaces and nature-based solutions adapted to local conditions.



NEOM | KSA LOCATION
2021 - 2023 PROJECT YEAR
2023 - 2026 CONSTRUCTION YEAR
368 ha AREA

Wahah Centre of Excellence



The Centre of Excellence is conceived as a large-scale landscape and agronomic system in NEOM's coastal desert, structured around the restoration and enhancement of an existing oasis. It integrates nursery production, research, training facilities, and public programmes within a single ecological and operational framework. The design follows a phased strategy of restoration, regeneration, and integration, preserving palm structures, run-off water systems, and native vegetation as a resilient baseline. A layered landscape enhances soil performance, biodiversity, and microclimatic conditions. Water management relies on natural wadis, while productive plots are embedded within the oasis matrix, ensuring operational efficiency and ecological continuity.

- 2nd Prize at the Landscape Middle East awards 2024



Jazan | KSA LOCATION
2024 PROJECT YEAR
246 ha AREA

Jazan's Downtown Waterfront



Jazan's Downtown Waterfront is a large-scale urban and coastal development along the Red Sea shoreline, shaping the new city centre of Jazan.

The project defines an expansion towards the coast that combines urban uses with sensitive environmental assets, including mangroves, beaches and coastal landscapes. The structure plan organises public space, mobility, landscape and waterfront infrastructure to support leisure, cultural and commercial activities. Landscape strategy is to merge coastal edges, reinforce the relationship with the sea and integrating natural systems with urban development, creating a resilient waterfront prepared for long-term growth and public use.



Zaragoza | Spain LOCATION
2026 PROJECT YEAR
79 ha AREA

Aragon Technology District



Conceived as a leading hub for innovation, sustainability, and collaboration in southern Europe, the district will combine new development with existing university and research infrastructure in a privileged natural setting on Zaragoza's Ebro River campus. Designed as a green, pedestrian-friendly environment, it will integrate sustainable mobility, landscaped public spaces, and architecture connected to nature. The development will bring together universities, research centres, startups, SMEs, and major technology companies, while also including housing, hospitality, sports, and cultural facilities. Planned in phases until 2029, it aims to attract talent, strengthen knowledge transfer, and generate quality employment, becoming a major driver of economic and social transformation.

- Selected for the 14th São Paulo International Architecture Biennial 2026



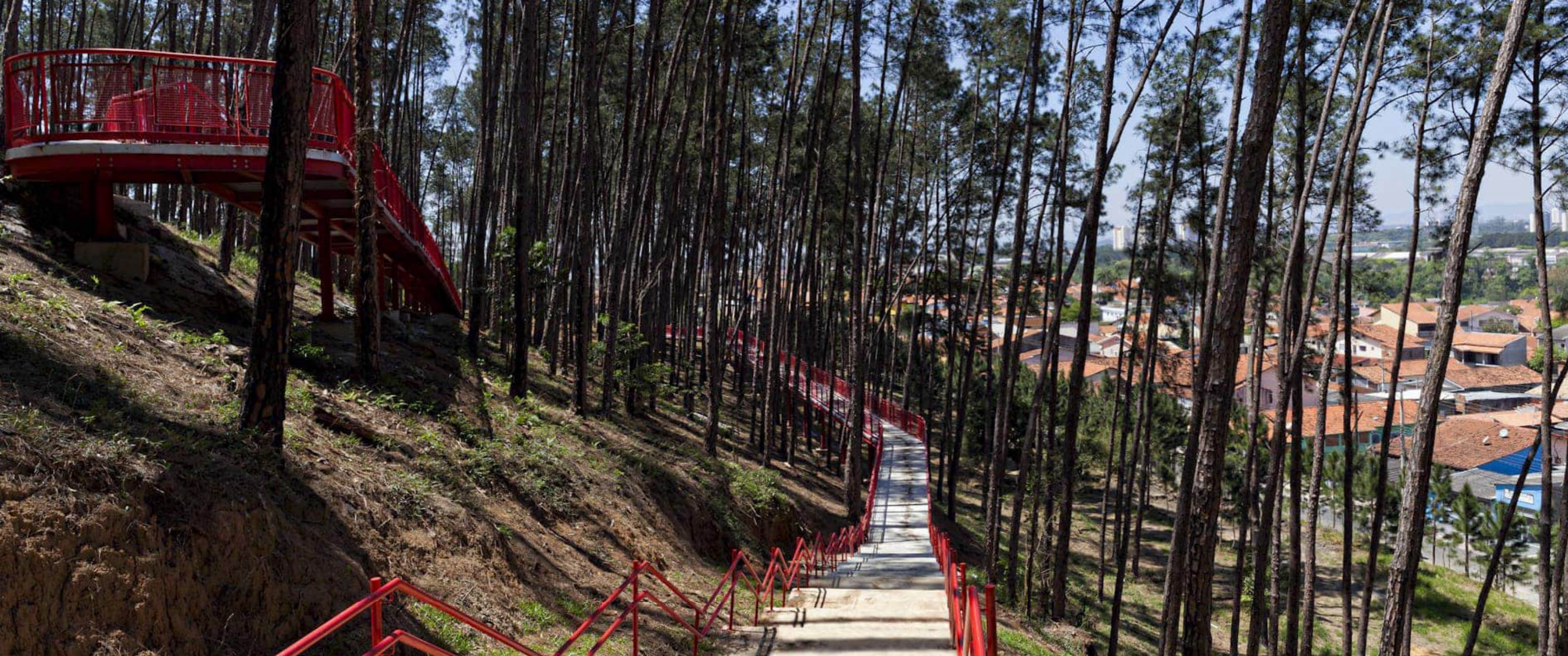
Riyadh | KSA LOCATION
2021-2024 PROJECT YEAR
2025 - On Going CONSTRUCTION YEAR
56 km AREA

Second Southern Ring Road



Inspired by Riyadh's geological strata, this landscape proposal for the Second Southern Ring Road develops a coherent territorial identity where infrastructure and nature merge into a unified system. The "Stratus" concept translates layered rock formations into spatial strategies based on three key elements: wadis, berms and terraces. A central wadi acts as a green ecological spine, enhancing biodiversity, managing stormwater, and introducing native xerophytic vegetation with minimal irrigation needs. Terraced slopes reinterpret traditional Najd architecture, while berms integrate resilient planting visible along the road corridor. The project balances urban infrastructure with natural systems, creating a sustainable, low-maintenance landscape that improves environmental performance, reinforces local character, and offers a recognisable and continuous visual experience along the highway.

Collaborating landscape architect: Liquidambar



São Jose dos Campos | Brazil LOCATION
2016 CONSTRUCTION YEAR
12,5 ha AREA

Alberto Simoes Urban Park

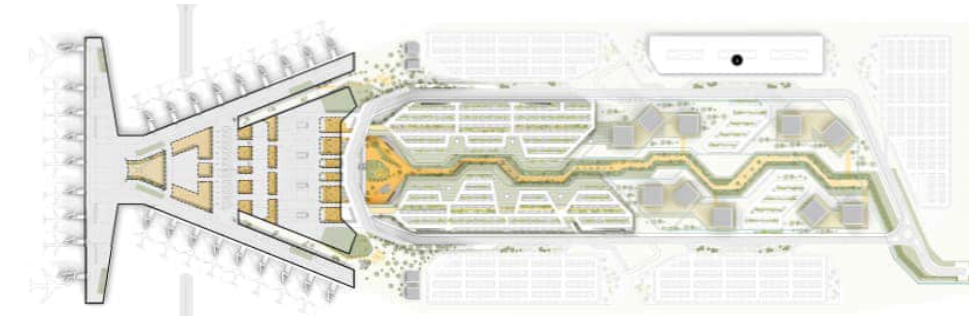


Steep topography, dense woodland, and the preservation of an existing country house define the character of this park in São José dos Campos. Rather than treating these conditions as constraints, the proposal turns them into the basis for an adventure-oriented landscape that takes advantage of the site's natural drops, mature pine vegetation, and panoramic views over the city and the Paraíba River. A continuous system of tracks and walkways connects the different uses and levels, linking zip-lines, tree adventure courses, climbing, skating, and BMX facilities. The historic house is repurposed as a cultural centre, while two entrances ensure a direct connection between the park and the city.



Santiago de Chile | Chile LOCATION
2026 PROJECT YEAR
9,6 Ha AREA

Santiago Airport



The proposal for the AMB Santiago Airport project integrates landscape as a structuring element within a large-scale infrastructural environment, supporting orientation, environmental performance and passenger experience.

The proposal links terminal internal areas with external spaces through clear spatial sequences, improving legibility and continuity. Landscape interventions respond to Chile's geographic identity, incorporating topography, materials, light and vegetation as design drivers. Open areas, circulation frameworks and planted zones contribute to environmental comfort while integrating infrastructure, mobility and public space into a coherent airport landscape system.

- Winner of the international competition



Passo Fundo | Brazil LOCATION
2016 CONSTRUCTION YEAR
10 ha AREA

Da Gare Urban Park



The project transforms a neglected central park into a contemporary landscape that reconnects the city with nature, history, and public life. The intervention combines landscape, infrastructure, and architecture to create a resilient and multifunctional civic space. Historical traces and existing vegetation are preserved, while new material strategies and spatial sequences define areas for gathering, leisure, and contemplation. The ecological approach reinforces biodiversity through native planting, seasonal variation, and improvements to the lake environment. Accessible paths, bridges, and retaining elements resolve topographical challenges, enabling seamless circulation and turning the park into an inclusive, dynamic, and environmentally responsive urban landscape.

- Finalist in the AkzoNobel Awards



Zaragoza | Spain LOCATION
2004-2008 CONSTRUCTION YEAR
7,2 ha AREA

Ebro River Park



The Tenerías - Las Fuentes project transforms the right bank of the Ebro into a continuous pedestrian and recreational corridor linking the city centre with nearby natural landscapes. Extending from the Iron Bridge to the future dam, the proposal creates a landscaped promenade supported by sports, leisure, and water-based activities, responding to the dense surrounding neighbourhoods and encouraging everyday use. A clear network of routes separates cars, bicycles, and pedestrians in urban areas from leisure paths in natural settings. The project also improves visual and physical access to the river, enhances views towards the Basilica del Pilar, reshapes the terrain to reach the water, and reconnects the Huerva River with the Ebro waterfront.

- Finalist: 2010 A/P Award
- Featured in the catalogue of La Casa de la Arquitectura, a cultural institution and national museum under the Spanish Ministry of Housing and Urban Agenda



San Fernando de Henares | Spain LOCATION
2024-2025 CONSTRUCTION YEAR
8,8 ha AREA

San Fernando River Park



The proposal enhances the integration of urban and natural environments by improving connections with the sports complex, surrounding landscapes, and the town. It introduces accessible entrances and a network of pedestrian paths that promote walkability and micromobility while reducing car presence. Key access points adapt to existing topography and irrigation channels, linking the site to nearby parks and agricultural areas.

The Paseo de los Pinos is redesigned as a shared, pedestrian-oriented street with shaded rest areas and recreational features, strengthening its relationship with public spaces. Additional strategies include cycling infrastructure, selective fencing to preserve ecological continuity, and terraced planting to create vegetated buffers. Flexible ground treatments support both everyday use and temporary activities such as markets and fairs, ensuring resilience and long-term adaptability.

- Winner of the international competition



New Delhi | India LOCATION
2017-2024 PROJECT YEAR
2024-2025 CONSTRUCTION YEAR
91 ha AREA

India Convention & Expo Centre



The project is conceived not only as a major convention and exhibition destination, but also as a new urban landscape structured through connectivity, public realm, and spatial identity. The proposal organises the complex into two clearly differentiated sectors, with fair and convention facilities to the west and mixed-use development to the east, linked by a monumental linear foyer. Beyond functional efficiency, the project builds a strong relationship between architecture, movement, and civic space, using landscape and urban form to create orientation and continuity at multiple scales. Indian cultural motifs and ceremonial traditions are reinterpreted as part of an integrated architectural and landscape language.

- 2025 -
- 1st Prize International Architecture Awards 2025 Category: Civic Centers
- Shortlisted. WAF Completed Buildings - Civic and Community 2025
- Shortlisted. WAF Completed Buildings - Display 2025

- 2024 -
- Structure of the Year 2024
- 2022 -
- Prize. World Design Awards 2022. Category: Mixed Use
- Shortlisted. WAF Awards 2022. Category: Future Projects - Mixed Use



NEOM | KSA LOCATION
2022-2025 PROJECT YEAR
2026 CONSTRUCTION YEAR
92.000 m² AREA

Coral Nursery



An advanced coral cultivation ecosystem designed to accelerate reef restoration at a large scale.

Conceived as a land-based nursery capable of producing approximately 200,000 coral fragments per year, the facility combines innovative propagation methods with resilient life-support systems, biosecurity measures, and operational redundancy to ensure long-term growth and conservation.

Beyond its scientific role, the development integrates offices, staff facilities, a diving centre, boat maintenance areas, visitor spaces, and supporting utilities. The system is extended to the shoreline, linking research, marine operations within an innovative coastal infrastructure.



Ollauri (La Rioja) | Spain LOCATION
2016 PROJECT YEAR
2020 CONSTRUCTION YEAR
16.000 m² AREA

Beronia Winery in Ollauri



Beronia Rioja Winery is designed as a landscape-driven project carefully integrated into the terrain of Rioja Alta. Taking advantage of a natural 8-meter concave slope, the winery is embedded into the ground, placing the production areas below grade and the social and wine tourism spaces above. This strategy enables gravity-based wine production, improves thermal performance through the earth's natural inertia, and strengthens the building's connection to the surrounding landscape. The production program is organized in a linear sequence adapted to the site's geology, while the social spaces maintain visual contact with both the territory and the winemaking process. The result is an efficient, low-impact, and iconic winery.

Collaborating landscape architect: Arkhe Landscaping

- International Architecture Award (IAA) 2022



Kutaisi | Georgia LOCATION
2021 PROJECT YEAR
2022-2024 CONSTRUCTION YEAR
15.000 m² AREA

KIU Protontherapy Center



The KIU Protontherapy Center is a highly specialized health-care and research facility integrated within the Kutaisi International University campus in Georgia.

Designed to host the country's first proton therapy unit, the project combines advanced cancer treatment technologies with spaces for research, diagnostics and patient care. The architectural and landscape design work together to humanize a technically complex environment, creating calm external areas that support patient wellbeing and campus life.



Valencia | Spain LOCATION
2024 PROJECT YEAR
2026 CONSTRUCTION YEAR
92.000 m² AREA

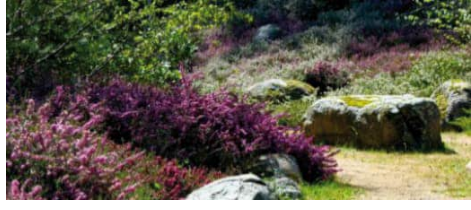
Edwards Lifesciences Plant



Modified views with microtopography and vegetation



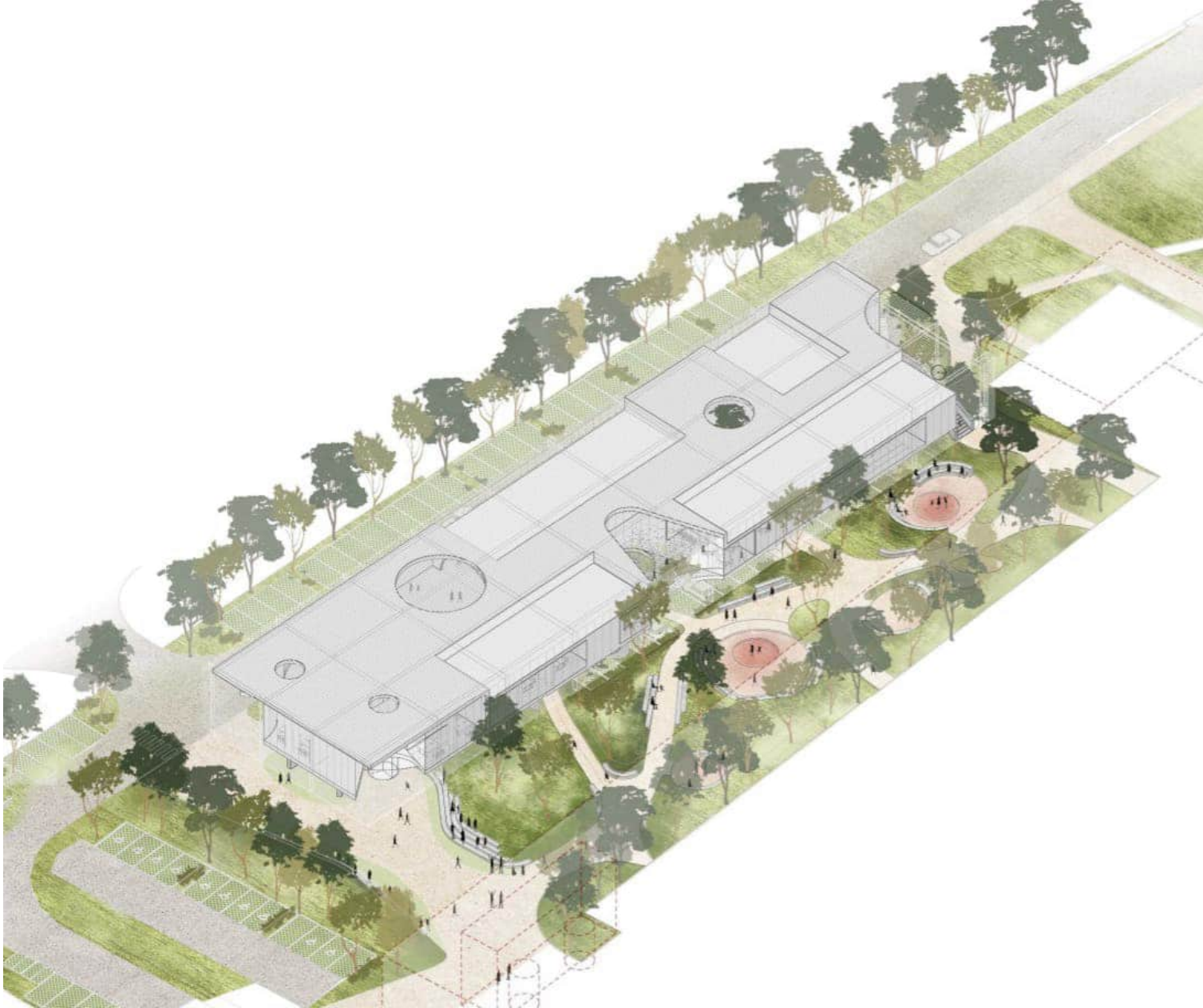
Gardens: Integrating the patient experience



Native mediterranean rock garden species



Mixed pavements for enhanced permeability



The Edwards Lifesciences Plant in Moncada, Valencia, is conceived as a next-generation industrial facility where advanced healthcare manufacturing is integrated with a carefully structured site and landscape strategy.

Developed as a key European production hub, the project combines high technical performance with sustainability and environmental quality. The landscape design organizes access, logistics and buffer areas while softening the scale of the industrial volumes and reinforcing the relationship with the surrounding territory. Green infrastructure, external spaces and site planning contribute to functional clarity, climate adaptation and long-term resilience.

other projects



3 Chimneys Coastal Park

Location Barcelona | Spain
Project year 2025 Area 6,3 ha



Markham College Campus

Location Lima | Perú
Project year 2024 Area 21.580 m²



Water Demand - Forestation

Location KSA
Project year 2022 Area 2.100 Ha



Forest Park-Euipo Campus UTI

Location Alicante | Spain
Project year 2020 Area 18.580 m²



Getafe Stadium

Location Getafe | Spain
Project year 2025 Area 22.000 m²



NEOM Highway Beautification

Location KSA
Project year 2023 Area 21 km



HIDC Beautification

Location Neom Region | KSA
Project year 2021 Area 25.000 m²



Distrito Castellana Norte

Location Madrid | Spain (Competition)
Project year 2020 Area 30 Ha



New Metro Stations Integration

Location Santiago de Chile | Chile
Project year 2017 Area 10 Stations



Metrolink

Location Dublin | Ireland
Project year 2016 Area Several stations



Urban Tramway Integration

Location Guatemala | Guatemala
Project year 2016 Area 21 Km



New University Campus

Location Lima | Peru
Project year 2015 Area 450.000 m²



Galindez Slope Development

Location Bilbao | Spain
Project year 2009 Area 11.000 m²



Xátiva's Sports City

Location Xátiva | Spain
Project year 2017 Area 136.000 m²



East Delhi Hub

Location Delhi | India
Project year 2016 Area 30 Ha



German Football Association HQ

Location Frankfurt | Germany
Project year 2015 Area 40,75 Ha



Pilar Square

Location Zaragoza | Spain
Project year 2014 Area 4.200 m²



Central Business Park

Location Erandio | Spain
Project year 2009 Area 76.000 m²



Expo Zaragoza 2008

Location Zaragoza | Spain
Project year 2008 Area 25 Ha

offices

Offices

AMERICA

USA
Minneapolis
Atlanta
Houston

CANADA
St. John

MEXICO
Mexico City

CHILE
Santiago
de Chile

COLOMBIA
Bogota
Medellin

PERU
Lima

BRAZIL
São Paulo

COSTA RICA
San Jose

PANAMA
Panama

PARAGUAY
Asuncion

EUROPE

UK
London
Derbyshire
Manchester

FRANCE
Marseille

GERMANY
Düsseldorf

DENMARK
Copenhagen

IRELAND
Dublin

POLAND
Warsaw
Wroclaw

SPAIN
Bilbao
Madrid

SWEDEN
Malmö

OCEANIA

AUSTRALIA
Melbourne

MIDDLE EAST

SAUDI ARABIA
Riyadh

EMIRATES
Abu Dhabi
Dubai

BAHRAIN
Manama

ASIA - PACIFIC

INDIA
New Delhi

MALAYSIA
Kuala Lumpur

PHILIPPINES
Manila

SOUTH KOREA
Seoul

AFRICA

ETHIOPIA
Addis Ababa

SENEGAL
Dakar



We are an association of independent professionals working in the fields of Consulting, Engineering and Architecture, sharing common objectives and work practices, at the service of our clients.

Contact details

Head of Landscape Architecture

Manuela Casado
mcasado@idom.com

Madrid

Avda. del Monasterio de El Escorial, 4, 28049
T. +34 91 444 11 55

Bilbao

Avda. Zarandoa, 23, 48015
T. +34 94 479 76 00



